

FIG.160 TRANSFER CASE ASSEMBLY (SHEET 1 OF 2)

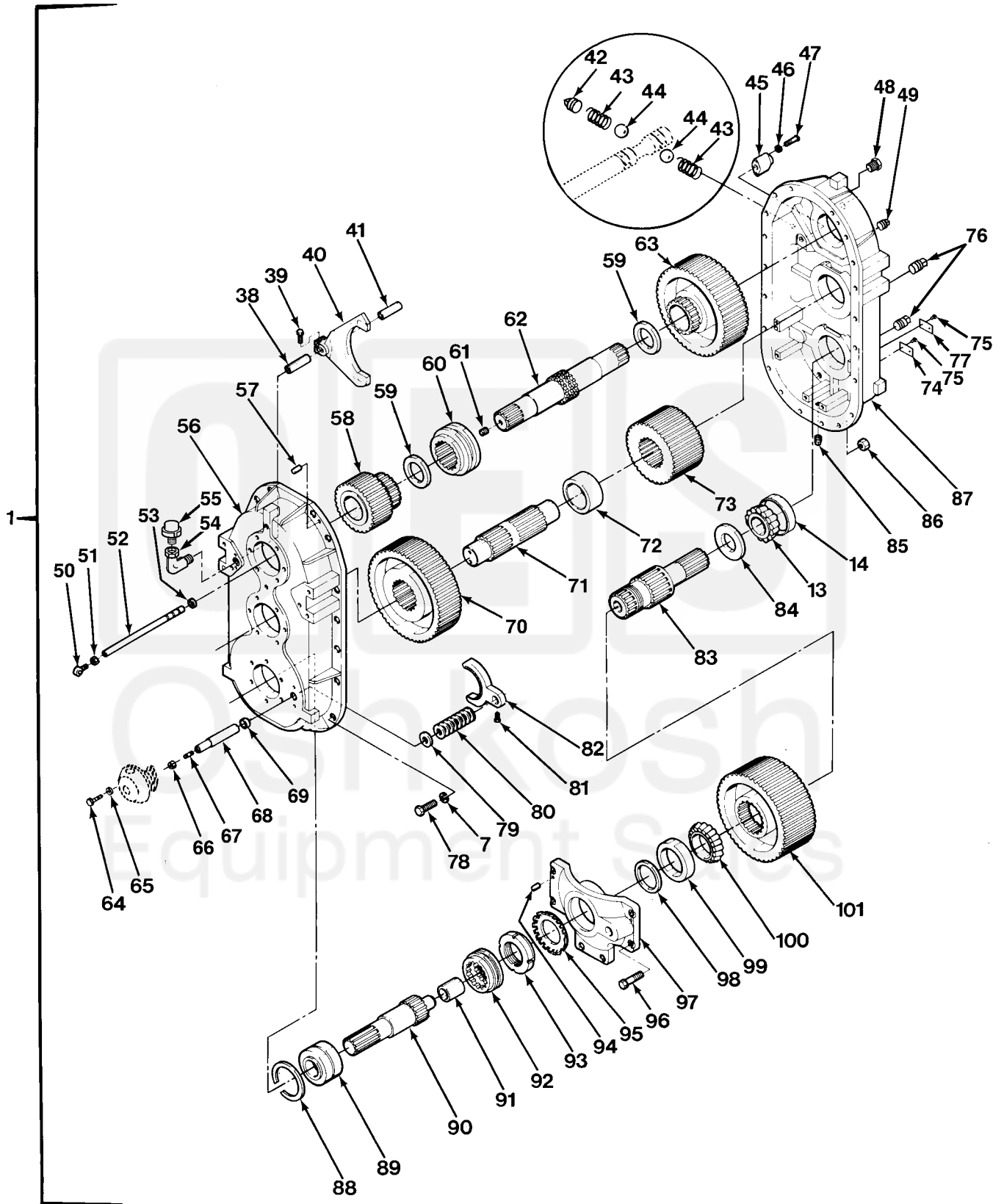


FIG.160 TRANSFER CASE ASSEMBLY (SHEET 2 OF 2)

SECTION II			TM 9-2320-279-24P			
(1)	(2)	(3)	(4)	(5)	(6)	
ITEM NO	SMR CODE	CAGEC	PART NUMBER	DESCRIPTION AND USABLE ON CODES(UOC)	QTY	
GROUP 0801 POWER TRANSFER AND FINAL DRIVE ASSEMBLIES						
FIG.160 TRANSFER CASE ASSEMBLY						
1	PAFHD	45152	1301130U	TRANSFER TRANSMISSI INCLUDES	1	
				LOCKOUT SHIFT CHAMBER,LUBE PUMP,L 0		
				OUTPUT YOKE		
2	PAFZZ	45152	738HX1	.SCREW	6	
3	PFFZZ	45152	127272A	.COVER,ACCESS	2	
4	PAFZZ	72447	6-4-2251	.YOKE,UNIVERSAL JOIN	1	
5	PAFZZ	80201	32397	.SEAL,PLAIN ENCASED	2	
6	PAHZZ	45152	738HX1	.SCREW	30	
7	PAHZZ	96906	MS35338-48	.WASHER,LOCK	56	
8	PFHZZ	45152	55019CX	.PLATE,RETAINING,SHA	2	
9	PFHZZ	45152	1317890	.SPACER,RING	1	
10	PAHZZ	60380	WJ485424	.RETAINER AND ROLLER	4	
11	PFHZZ	45152	55028BX	.SPACER,RING	2	
12	PFHZZ	45152	55026BX	.SPACER,RING	4	
13	PAHZZ	60038	641	.CONE AND ROLLERS,TA	5	
14	PAHZZ	60038	633	.CUP,TAPERED ROLLER	5	
15	PAHZZ	71724	T-560-0379-001	.RING,PISTON	1	
16	PFHZZ	45152	1304240	.CAP,DUST,PROPELLER	1	
17	PFHZZ	45152	1304230	.PLATE,RETAINING,SHA	1	
18	PAHZZ	80204	B1821BH050C150N	.SCREW,CAP,HEXAGON H	8	
19	PAHZZ	45152	55084BX	.SPACER,PLATE	9	
20	PAHZZ	45152	55085BX	.SHIM	9	
21	PAHZZ	45152	55086BX	.SHIM	9	
22	PAHZZ	45152	1304170	.HOUSING,POWER TAKE-	1	
23	PAHZZ	57733	78744	.REDUCER,TUBE	1	
24	PFHZZ	45152	55021CX	.HOUSING,BEARING UNI	2	
25	PAHZZ	71041	TP612	.BEARING,WASHER,THRU	1	
26	PAHZZ	45152	40393AX	.BEARING,WASHER,THRU	1	
27	PAHZZ	45152	53733AX	.SPRING,HELICAL,COMP	1	
28	PAHZZ	45152	1413020	.BOLT,SELF-LOCKING	2	
29	PAHZZ	57733	105591	.SHAFT,SHOULDERED	1	
30	PFHZZ	45152	1432440	.PLATE,RETAINING,SHA	1	
31	PAHZZ	73460	20226	.PLUG,MACHINE THREAD	1	
32	PFFZZ	45152	127273A	.SPACER,PLATE	1	
33	PAFZZ	72447	6-4-6771X	.YOKE,UNIVERSAL JOIN	1	
34	PAFZZ	01212	416624	.SEAL,PLAIN ENCASED	1	
35	PFHZZ	45152	55022DX	.PLATE,RETAINING,BEA	1	
36	PAHZZ	81348	WW-P-471AASBCB	.PLUG,PIPE	1	
37	PAFZZ	45152	18127FX1	.SPACER,RING	1	
38	PFHZZ	45152	59902AX	.SPACER,SLEEVE	1	
39	PAHZZ	45152	335BX2	.BOLT	2	
40	PAHZZ	45152	64209CX	.SHIFTER FORK	1	
41	PFHZZ	45152	59903AX	.SPACER,SLEEVE	1	
42	PAHZZ	96906	MS20913-1S	.PLUG,PIPE	1	
43	PAHZZ	45152	54396AX	.SPRING,HELICAL,COMP	2	
44	PAHZZ	11083	4B9880	.BALL,BEARING	2	
45	PFHZZ	45152	1321590	.COVER,ACCESS	1	
46	PAHZZ	45152	354AX	.WASHER,LOCK	2	
47	PAHZZ	24617	9423808	.SCREW,CAP,HEXAGON H	2	

SECTION II			TM 9-2320-279-24P, C02		
(1)	(2)	(3)	(4)	(5)	(6)
ITEM NO	SMR CODE	CAGEC	PART NUMBER	DESCRIPTION AND USABLE ON CODES(UOC)	QTY
48	PAHZZ	81348	WW-P-471AASBCC	.PLUG,PIPE	1
49	PAHZZ	96906	MS20913-4S	.PLUG,PIPE	1
50	PFHZZ	45152	59899AX	.CONNECTOR,ROD END	1
51	PAHZZ	45152	1320HX	.NUT,PLAIN,HEXAGON	1
52	PFHZZ	45152	105761C	.SHAFT,STRAIGHT	1
53	PAHZZ	80201	541791-95	.SEAL,PLAIN,ENCASED	1
54	PAHZZ	96906	MS39230-3	.ELBOW,PIPE	1
55	PAOZZ	00736	14132	.BREATHER	1
56	PFHZZ	45152	105900R	.HOUSING,FRONT	1
57	PFHZZ	45152	55075AX	.PIN,STRAIGHT,HEADLE	2
58	PFHZZ	45152	115403D	.GEAR CLUSTER	1
59	KFHZZ	45152	55027BX	.SPACER,RING PART OF KIT P/N 2SK640 ..	2
60	PFHZZ	45152	1308950	.GEAR,INTERNAL	1
61	PAHZZ	24617	444861	.PLUG,PIPE	1
62	PFHZZ	45152	1315270	.SHAFT,SHOULDERED	1
63	PBHZZ	45152	115407D	.GEAR CLUSTER	1
64	PAFZZ	97403	13222E0109	.BOLT,MACHINE	2
65	PAFZZ	96906	MS35338-46	.WASHER,LOCK	2
66	PAFZZ	96906	MS21045-5	.NUT,SELF-LOCKING,HE	1
67	PAFZZ	45152	63216AX	.STUD,PLAIN	1
68	PAHZZ	45152	63219CX	.SHAFT,SHOULDERED	1
69	PAHZZ	45152	31425BX	.RING,PILOT	1
70	PFHZZ	45152	115405D	.GEAR,HELICAL	1
71	PFHZZ	45152	111295D	.SHAFT,SHOULDERED	1
72	KFHZZ	45152	55031BX	.SPACER,RING PART OF KIT P/N 2SK640 ..	1
73	PFHZZ	45152	115404D	.GEAR,HELICAL	1
74	PAOZZ	45152	60009AX	.PLATE,INSTRUCTION	1
75	PFOZZ	45152	1538800	.TACK	4
76	PAOZZ	96906	MS20913-6S	.PLUG,PIPE	2
77	PFOZZ	45152	11757HX	.PLATE,SERIAL NUMBER	1
* 78	XAHZZ	45152	1867HX1	.SCREW,CAP,HEXAGON H	20
79	PFHZZ	45152	55068BX	.WASHER,FLAT	1
80	PAHZZ	03018	56	.WASHER,SPRING TENSI	8
81	PAHZZ	45152	5106FX	.SETSCREW	1
82	PFHZZ	45152	55042CX	.SHIFTER FORK	1
83	PAHZZ	45152	127270D	.SHAFT,SHOULDERED	1
84	KFHZZ	45152	55029BX	.SPACER,RING PART OF KIT P/N 2SK640 ..	1
85	PAOZZ	36540	402Y23E	.PLUG,PIPE,MAGNETIC	1
* 86	PAOZZ	45152	1768HX1	.NUT,PLAIN,HEXAGON	20
87	XAHZZ	45152	117937R	.TRANSFER TRANSMISSI	1
88	PAHZZ	72800	NAN412	.RING,RETAINING	1
89	PAHZZ	60038	462 ASSEM. 90300	.BEARING,ROLLER,TAPE	1
90	PFHZZ	45152	127268D	.SHAFT,SHOULDERED	1
91	PAHZZ	45152	1594F	.BEARING,SLEEVE	1
92	PBHZZ	45152	55025BX	.COLLAR,SHAFT	1
93	PAHZZ	96906	MS19068-18	.NUT,PLAIN,ROUND	1
94	PFHZZ	45152	30190AX	.PIN,DOWEL	2
95	PAHZZ	43334	W18	.WASHER,KEY	1
96	PAHZZ	80204	B1821BH044C113N	.SCREW,CAP,HEXAGON H	6
97	PFHZZ	45152	111805R	.PLATE,RETAINING,BEA	1
98	KFHZZ	45152	55030BX	.SPACER,RING PART OF KIT P/N 2SK640 ..	1
99	PAHZZ	60038	JM718110	.CUP,TAPERED ROLLER	1

Current part is item (62) on diagram. Available at www.oshkoshequipment.com

SECTION II			TM 9-2320-279-24P		
(1)	(2)	(3)	(4)	(5)	(6)
ITEM	SMR		PART		
NO	CODE	CAGEC	NUMBER	DESCRIPTION AND USABLE ON CODES(UC)	QTY
100	PAHZZ	60038	JM718149	.CONE AND ROLLERS,TA	1
101	PFHZZ	45152	115406D	.GEAR,HELICAL	1

END OF FIGURE



Current part is item (62) on diagram. Available at www.oshkoshequipment.com